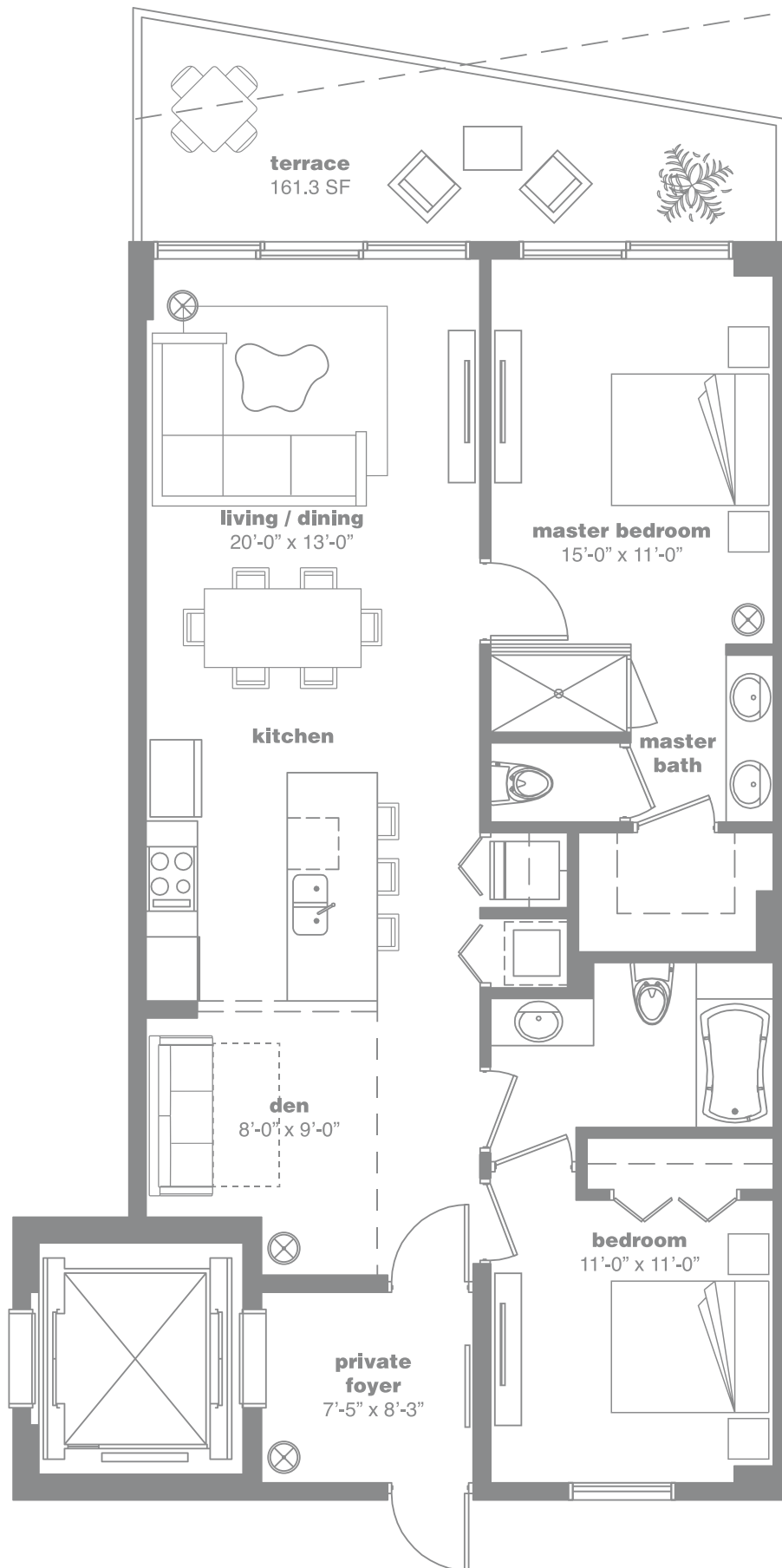


residence

04

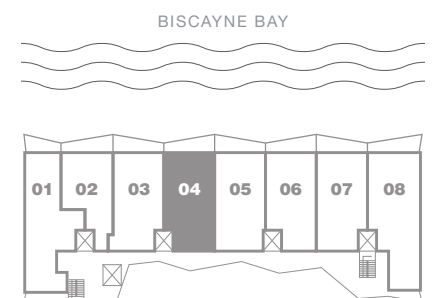
levels 4th to 39th



terraces

dotted lines - floors 8th thru 11th, 18th thru 21st
27th thru 30th and 36th thru 39th

solid lines - floors 4th thru 7th, 12th thru 17th
22nd thru 26th and 31st thru 35th



2 Bedrooms + Den / 2 Bathrooms

AC: 1,173 Sq. Ft. 108.9 Sq. Mt. // Terrace: 161.3 Sq. Ft. 15 Sq.. Mt. // Total Sq. Ft.: 1,335 // Total Sq. Mt.: 124

Stated dimensions are measured to the exterior boundaries of the exterior walls and the centerline of interior demising walls and in fact vary from the dimensions that would be determined by using the description and definition of the "Unit" set forth in the Declaration (which generally only includes the interior airspace between the perimeter walls and excludes interior structural components). For your reference, the area of the Unit, determined in accordance with those defined unit boundaries, is + or - 1,104 sq. ft. for units 04. Note that measurements of rooms set forth on this floor plan are generally taken at the greatest points of each given room (as if the room were a perfect rectangle), without regard for any cutouts. Accordingly, the area of the actual room will typically be smaller than the product obtained by multiplying the stated length times width. All dimensions are approximate and may vary with actual construction, and all floor plans and development plans are subject to change.